

HOOD INFORMATION – Job#3926266

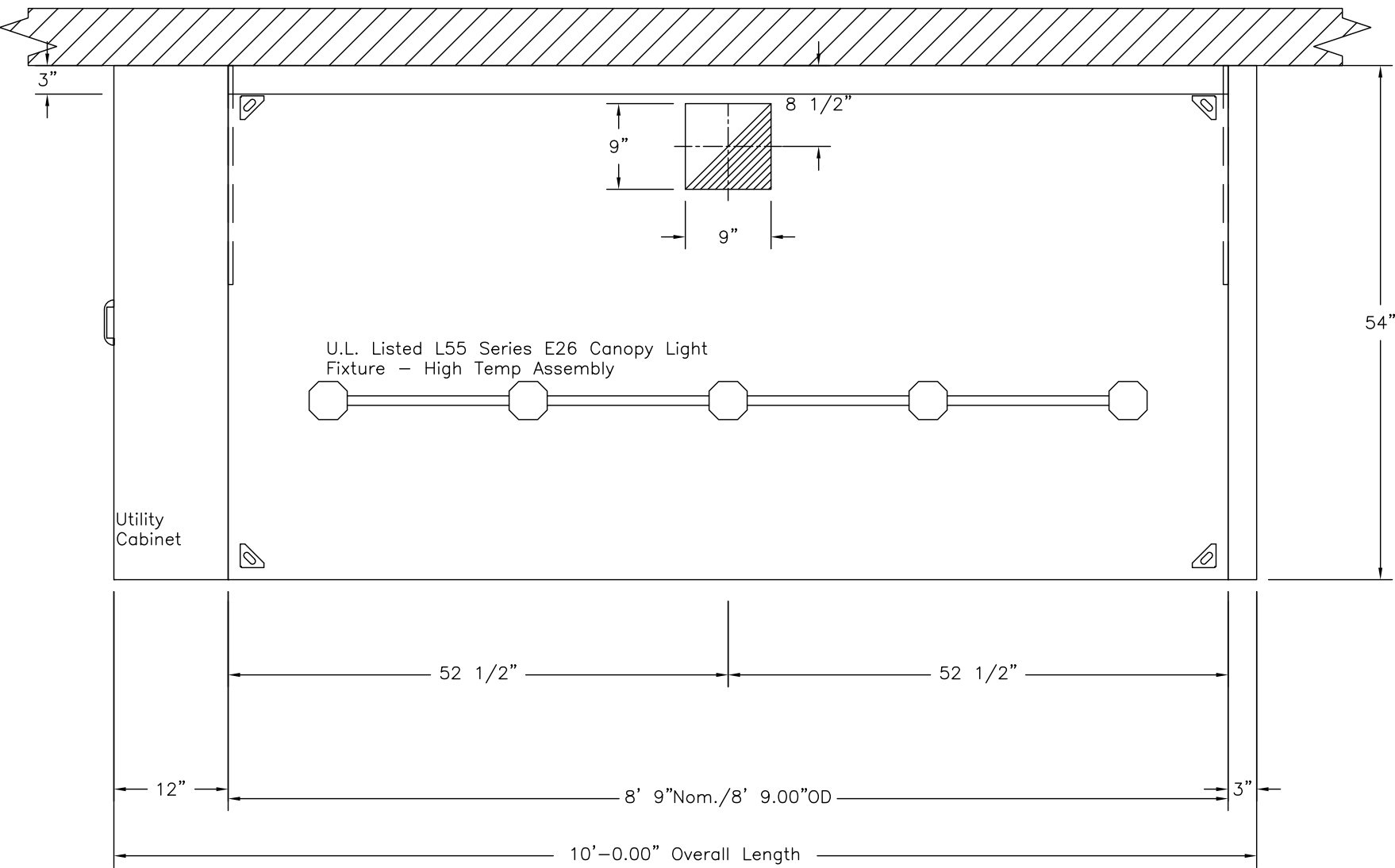
HOOD NO.	TAG	MODEL	LENGTH	MAX. COOKING TEMP.	TOTAL EXH. CFM	EXHAUST PLENUM RISER(S)					VEL.	S.P.	HOOD CONSTRUCTION	HOOD CONFIG.	
						WIDTH	LENG.	HEIGHT	DIA.	CFM				END TO END	ROW
1		5424 V-ND-2	8' 9"	450 Deg.	919	9"	9"	4"		919	1634	~0.253"	430 SS Where Exposed	ALONE	ALONE

HOOD INFORMATION

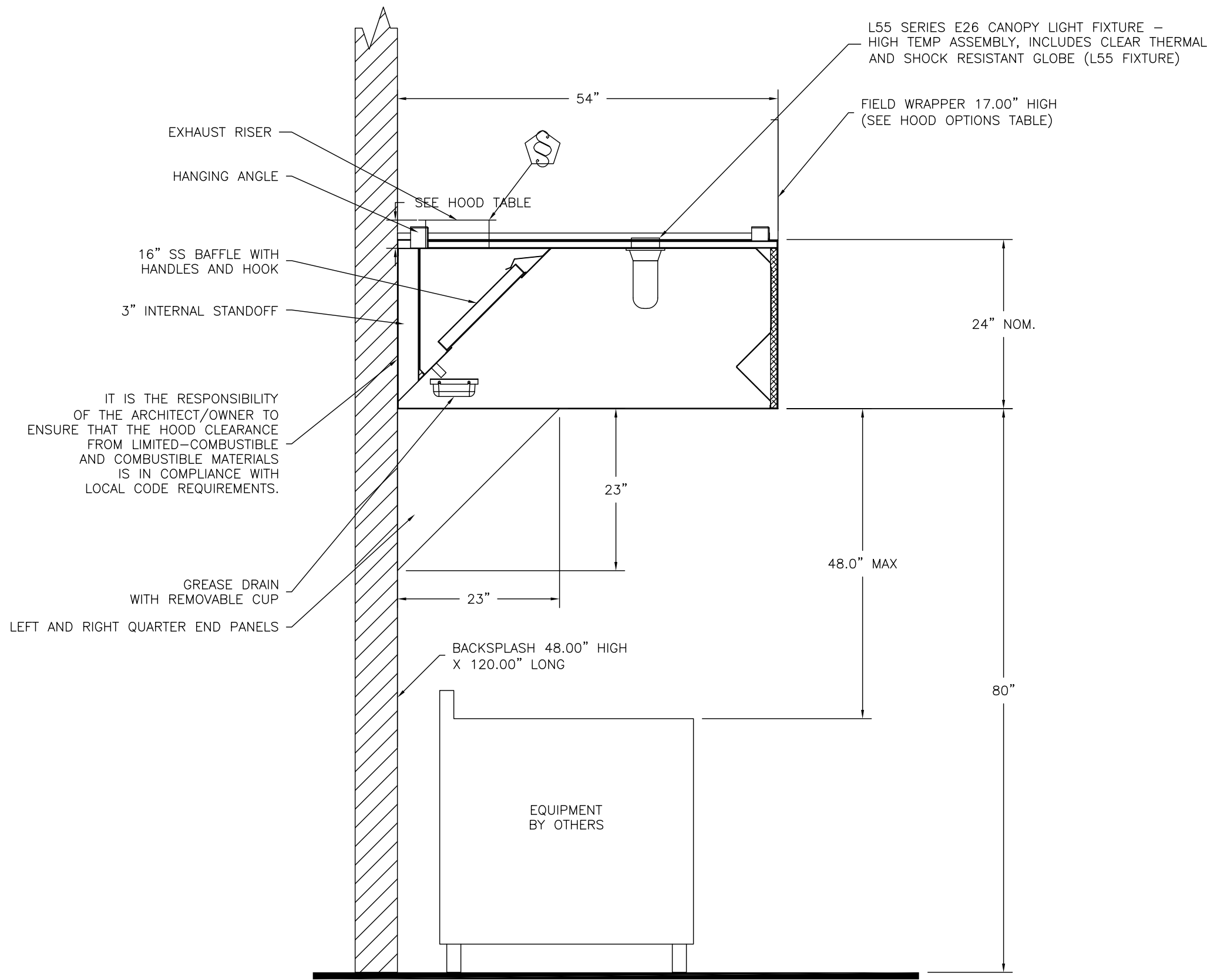
HOOD NO.	TAG	FILTER(S)					LIGHT(S)			UTILITY CABINET(S)					FIRE SYSTEM PIPING	HOOD HANGING WGHT	
		TYPE	QTY.	HEIGHT	LENGTH	EFFICIENCY @ 7 MICRONS	QTY.	TYPE	WIRE GUARD	LOCATION	SIZE	FIRE SYSTEM		ELECTRICAL			SWITCHES
												TYPE	SIZE	MODEL #			QUANTITY
1		SS Baffle with Handles	6	16"	16"	30%	5	L55 Series E26	NO	Left	12"x54"x24"	Ansul R102	3.0	SC-11011002-FL	1 Light 1 Fan	YES	552 LBS

HOOD OPTIONS

HOOD NO.	TAG	OPTION			
1		FIELD WRAPPER	17.00"	High	Front, Left, Right
		BACKSPASH	48.00"	High X	120.00" Long 430 SS Horizontal
		RIGHT SIDESPLASH	48.00"	High X	54.00" Long 430 SS Horizontal
		RIGHT END STANDOFF (FINISHED)	3"	Wide	54" Long
		BACKSPASH – INSIDE CORNER	80.00"	High X	2.00" Leg Length 430 SS Vertical
		RIGHT QUARTER END PANEL	23"	Top Width,	0" Bottom Width, 23" High 430 SS
		LEFT QUARTER END PANEL	23"	Top Width,	0" Bottom Width, 23" High 430 SS

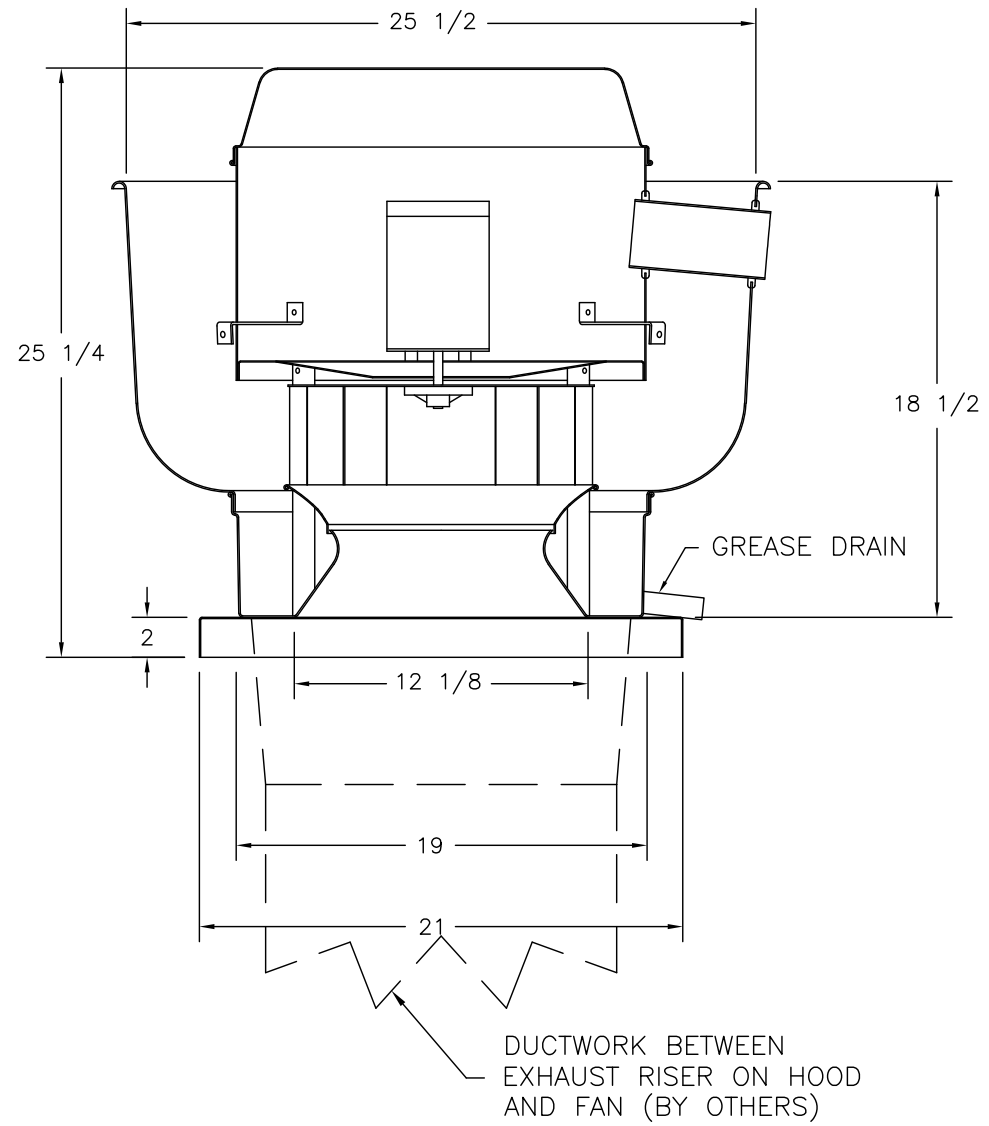


PLAN VIEW – Hood #1
8' 9.00" LONG 5424V-ND-2



SECTION VIEW – MODEL 5424V-ND-2
HOOD – #1

FAN #1 DU33HFA – EXHAUST FAN



FEATURES:

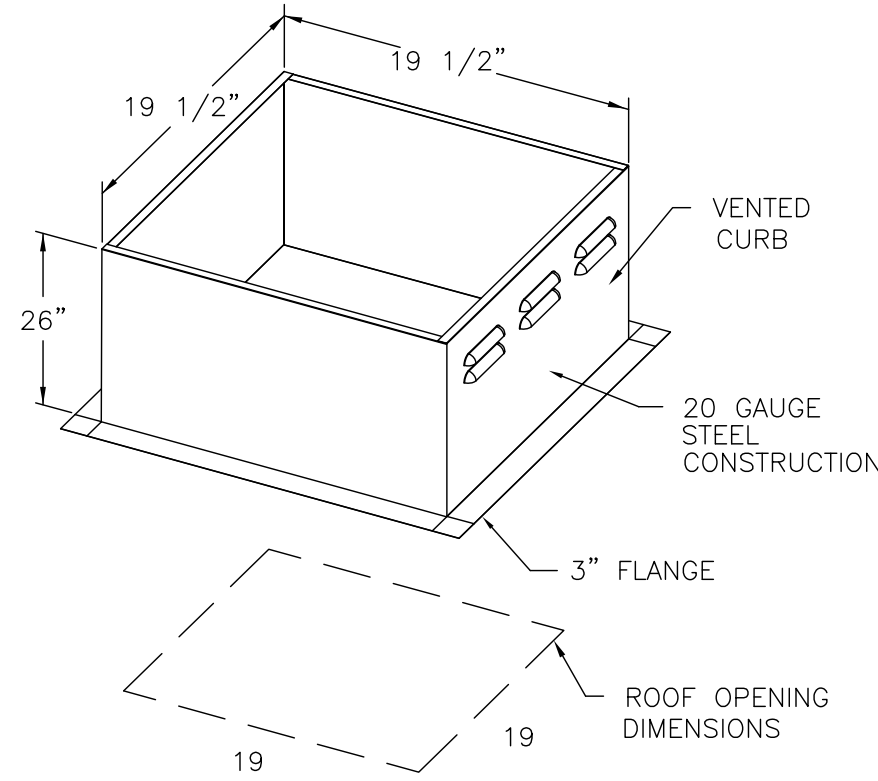
- DIRECT DRIVE CONSTRUCTION (NO BELTS/PULLEYS)
- ROOF MOUNTED FANS
- RESTAURANT MODEL
- UL705 AND UL762 AND ULC-S645
- VARIABLE SPEED CONTROL
- INTERNAL WIRING
- WEATHERPROOF DISCONNECT
- THERMAL OVERLOAD PROTECTION (SINGLE PHASE)
- HIGH HEAT OPERATION 300°F (149°C)
- GREASE CLASSIFICATION TESTING

NORMAL TEMPERATURE TEST
EXHAUST FAN MUST OPERATE CONTINUOUSLY WHILE EXHAUSTING AIR AT 300°F (149°C) UNTIL ALL FAN PARTS HAVE REACHED THERMAL EQUILIBRIUM, AND WITHOUT ANY DETERIORATING EFFECTS TO THE FAN WHICH WOULD CAUSE UNSAFE OPERATION.

ABNORMAL FLARE-UP TEST
EXHAUST FAN MUST OPERATE CONTINUOUSLY WHILE EXHAUSTING BURNING GREASE VAPORS AT 600°F (316°C) FOR A PERIOD OF 15 MINUTES WITHOUT THE FAN BECOMING DAMAGED TO ANY EXTENT THAT COULD CAUSE AN UNSAFE OPERATION.

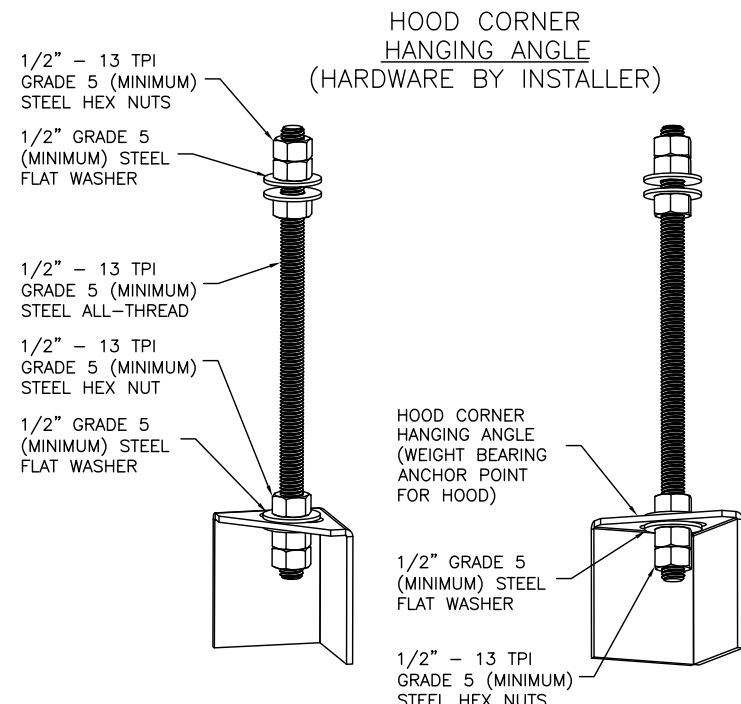
OPTIONS

GREASE BOX.
ECM WIRING PACKAGE-EXHAUST – MANUAL OR 0-10VDC REFERENCE SPEED CONTROL (NIDEC MOTOR).



PITCHED CURBS ARE AVAILABLE FOR PITCHED ROOFS.

SPECIFY PITCH:
EXAMPLE: 7/12 PITCH = 30° SLOPE



ASSEMBLY INSTRUCTIONS

HANGING ANGLE MUST BE SUPPORTED WITH 1/2" – 13 TPI GRADE 5 (MINIMUM) ALL-THREAD. SANDWICH HANGING ANGLES AND CEILING ANCHOR POINTS WITH 1/2" GRADE 5 (MINIMUM) STEEL FLAT WASHERS AND 1/2" – 13 TPI GRADE 5 (MINIMUM) HEX NUTS AS SHOWN. MUST USE DOUBLED HEX NUT CONFIGURATION BENEATH HOOD HANGING ANGLES AND ABOVE CEILING ANCHORS. MAINTAIN 1/4" OF EXPOSED THREADS BENEATH BOTTOM HEX NUT. TORQUE ALL HEX NUTS TO 57 FT-LBS.

EXHAUST FAN INFORMATION – Job#3926266

FAN UNIT NO.	TAG	FAN UNIT MODEL #	CFM	ESP.	RPM	H.P.	B.H.P.	ø	VOLT	FLA	DISCHARGE VELOCITY	WEIGHT (LBS.)	SONES
1		DU33HFA	919	0.500	1494	0.333	0.2200	1	115	4.4	455 FPM	69	14.7

FAN OPTIONS

FAN UNIT NO.	TAG	OPTION (Qty. – Descr.)
1		1 – Grease Box 1 – ECM Wiring Package-Exhaust – Manual or 0-10VDC Reference Speed Control (NIDEC Motor)

FAN ACCESSORIES

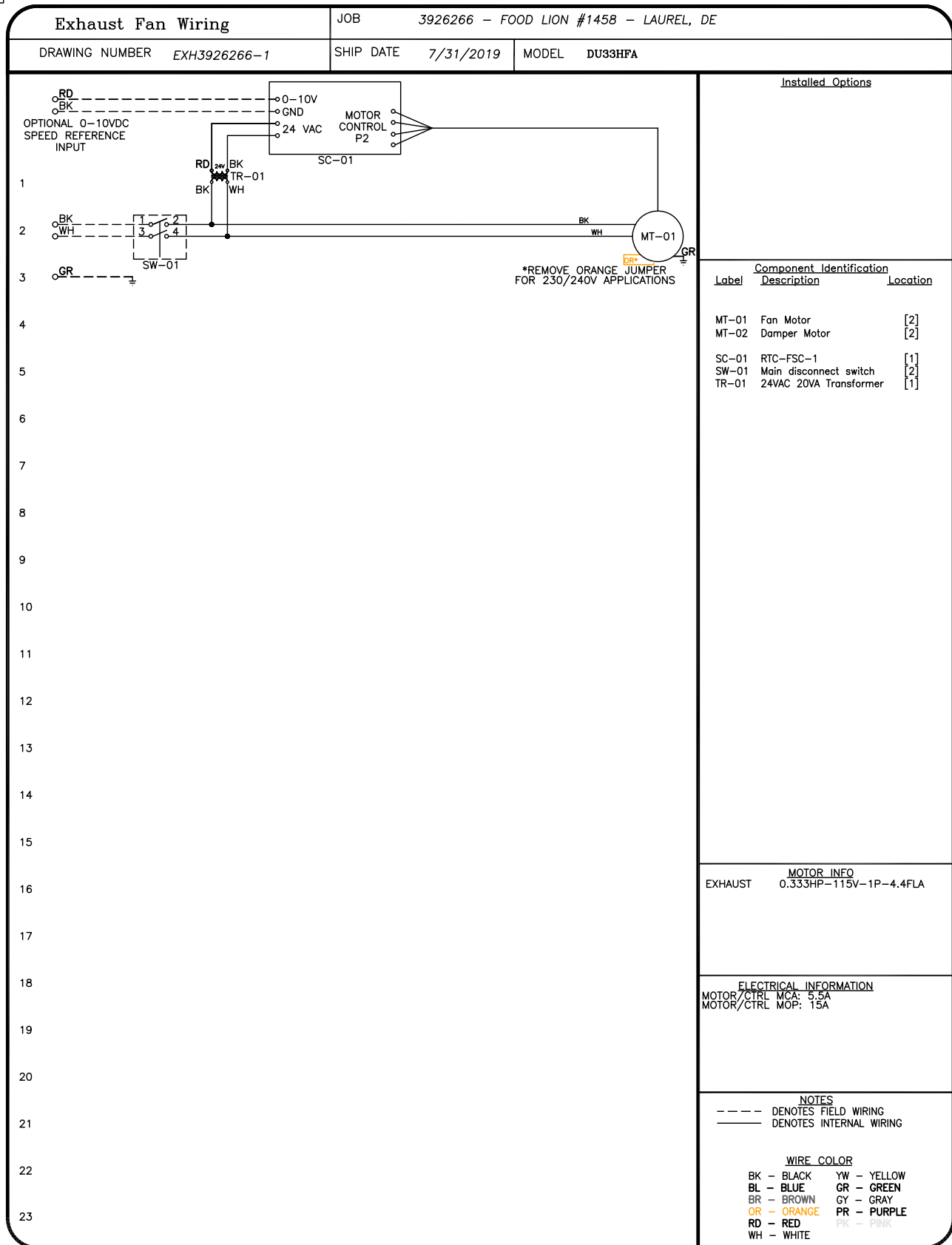
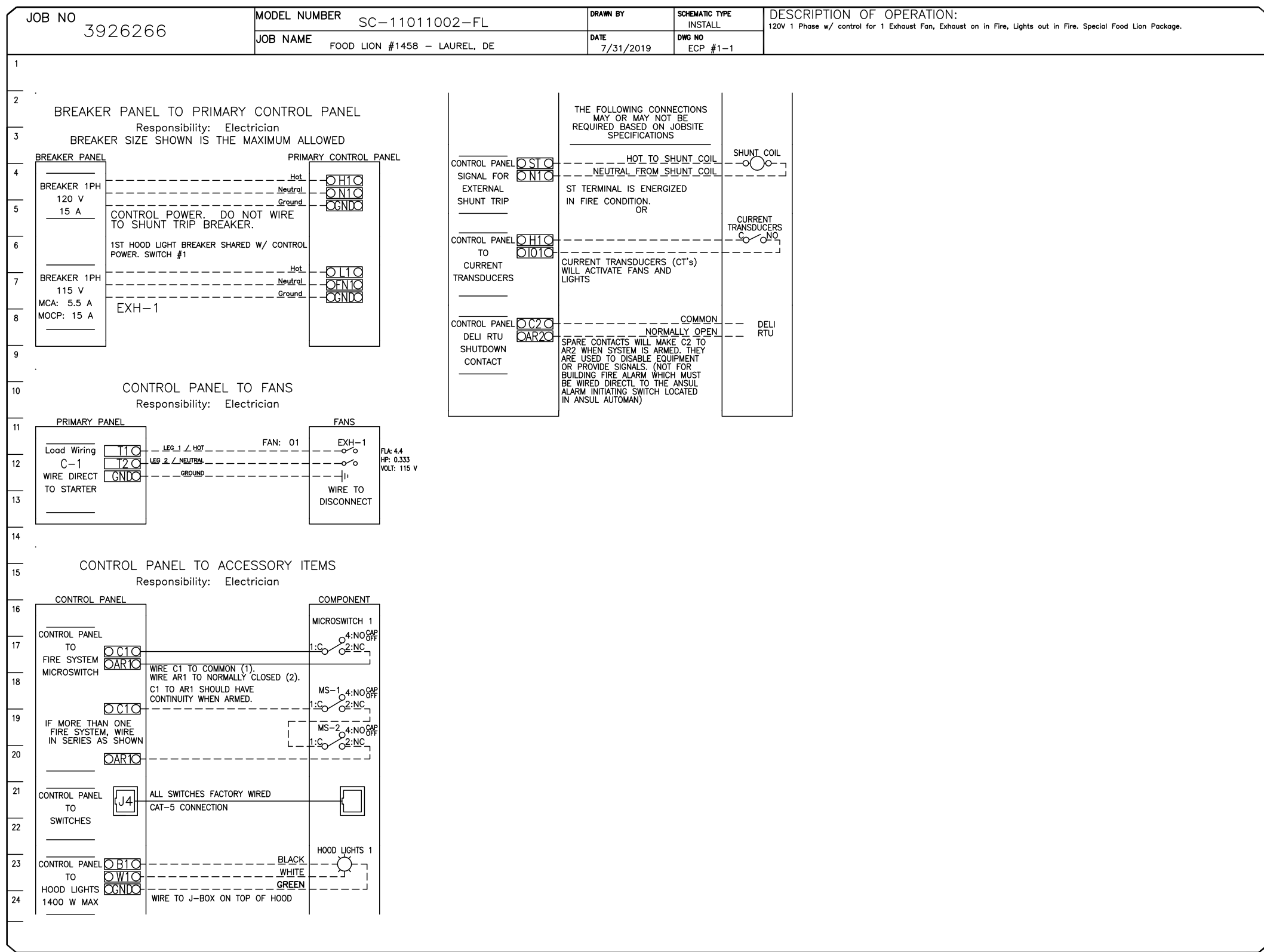
FAN UNIT NO.	TAG	EXHAUST			SUPPLY			
		GREASE CUP	GRAVITY DAMPER	WALL MOUNT	SIDE DISCHARGE	GRAVITY DAMPER	MOTORIZED DAMPER	WALL MOUNT
1		YES						

CURB ASSEMBLIES

NO.	ON FAN	WEIGHT	ITEM	SIZE
1	# 1	38 LBS	Curb	19.500"W x 19.500"L x 26.000"H Vented Hinged

ELECTRICAL PACKAGE – Job#3926266

NO.	TAG	PACKAGE #	LOCATION	SWITCHES		OPTION	FANS CONTROLLED				
				LOCATION	QUANTITY		TYPE	ø	H.P.	VOLT	FLA
1		SC-11011002-FL	Utility Cabinet Left	Utility Cabinet Left	1 Light		Exhaust	1	0.333	115	4.4
				Hood # 1	1 Fan	Smart Controls Basic					

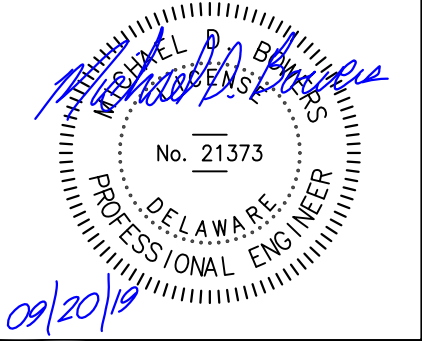


Yates-Chreibitzberg-Hughes
Architects, Corp.

Architecture
Interior Design
Land Planning
Project Management

BOWERS CONSULTING, PA
1620 South MLK, Jr. Avenue - Suite 106
Salisbury, NC 28144
T: 704-630-0075 F: 704-630-0051
DE COA: 4390

Professional Seals



Interior Alteration For:
FOOD LION
2110 Executive Drive, Salisbury, NC 28145/ Ph: 704.635.8250
Store No. 1458
30214 Sussex Hwy
Laurel, DE 19956

OWNERSHIP OF INSTRUMENTS OF SERVICE:

All reports, specifications, plans, computer files, field data, notes, and other documents and instruments of service shall remain the property of the Design Professional. The Design Professional shall retain all common law, statutory and other reserved rights, including the copyright thereof.

© Copyright 2019

Project No:

1458FLMK20

File Name:

1458 M4.02_00.dwg

Date: 09-20-19

Revisions:

DELI/BAKERY
HOOD DETAILS

Mechanical
M4.02

YCH Commission Number

19018.00

7035 Northwinds Dr NW

Concord, NC 28027

704 . 788 . 2000

ycharch.com

INFORMATION CONTAINED ON THIS SHEET PROVIDED BY MANUFACTURER

CAPTIVE FIRE